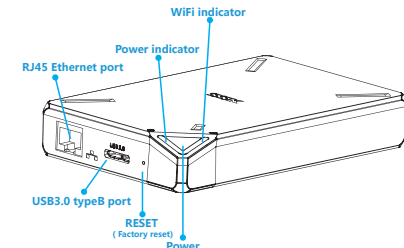




Welcome to use SSK Personal Cloud Storage
Please read the following tips carefully before you experience SSK Personal Cloud Storage

Device interfaces and LED Sketch Map



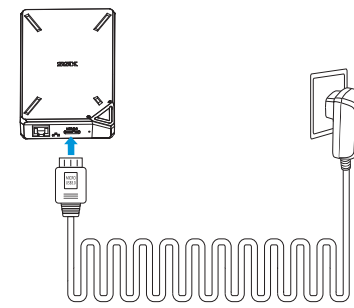
Product interfaces and LED indicator instructions

- LED indicator color instructions
- Blue: Wifi Indicator, blinking indicates Wifi data transmission
 - Yellow: Charging Indicator, blinking indicates charging
 - Red: Low Power Indicator, blinking indicates the battery will run out

Quick settings

Please charge for F200 before you use it.

Charge F200 by USB cable, yellow LED indicator will blink while charging, and the indicator light keeping on indicates charging completed.



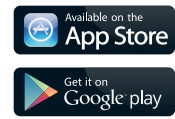
Install APP

Scan the following two-dimension code or search SSKCloud on App Store/Google play, and then download APP for Apple or Android.



SSK Cloud
SSM-F200
APP

SSK-Cloud Apps
iOS, Android

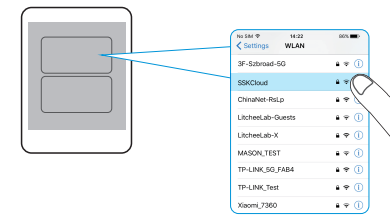


Long press the power button 3-4 seconds, LED indicator turns blue, indicating powering on.

Smart phone or PC connects F200 Wifi hotspot, access the personal cloud by SSK Cloud APP or software to experience the convenience.

Connect the SSM-F200 to mobilephones

Seek the Wi-Fi hotspot of SSK Cloud
Searching the WiFi hotspot of the SSK Cloud by mobile devices or iPad, then connect



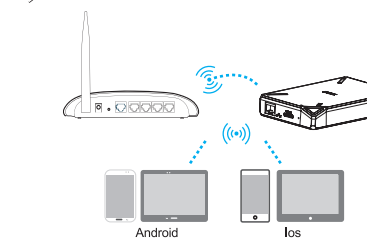
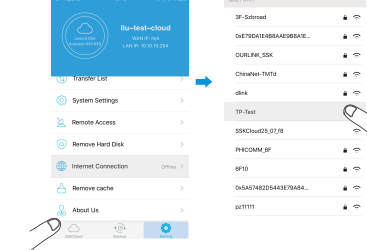
Click SSKCloud App, then access to the storage



After connecting to sskcloud wifi hotspot, you might find that your mobile devices cannot access to internet. The reason for this is that the storage sskcloud does not connect to external network.

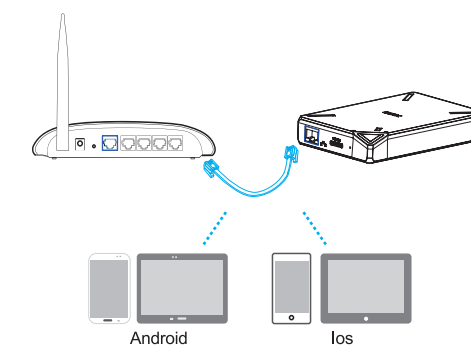
Ways to connect to internet for sskcloud:

Wireless connection



Or Wired connection

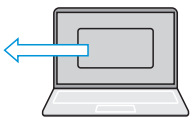
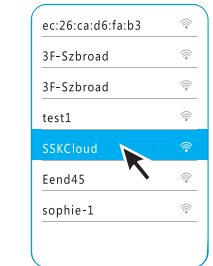
Insert the lan cable to Ethernet port.



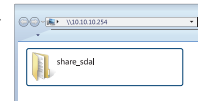
Remark: In order to ensure of the access speed, recommend the use of lan cable to connect the internet.

Ways to connect PC to SSM-F200

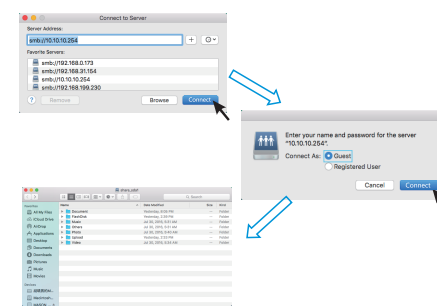
PC / Mac



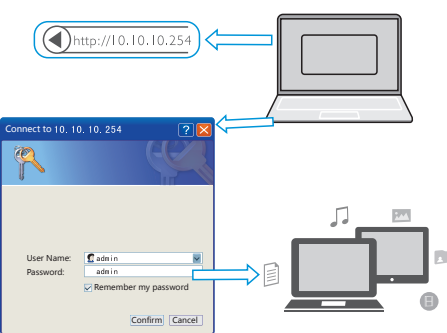
(1).Access to the product by SAMBA(Windows)
Open my computer, and input \\10.10.10.254 in the address bar
Default User Name: admin
Default Password: admin



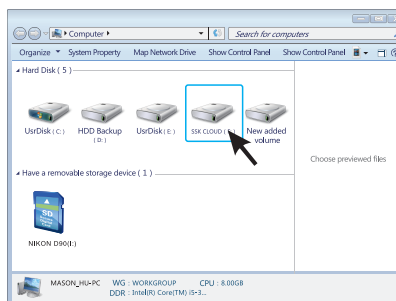
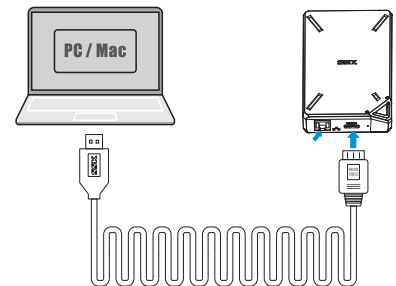
(2).Access to the product by SAMBA(Mac os)
Open Finder -> Click Go -> Click Network
Input smb://10.10.10.254



(3). Visit the product on WEB
Open IE explorer, and enter 10.10.10.254 into the address bar



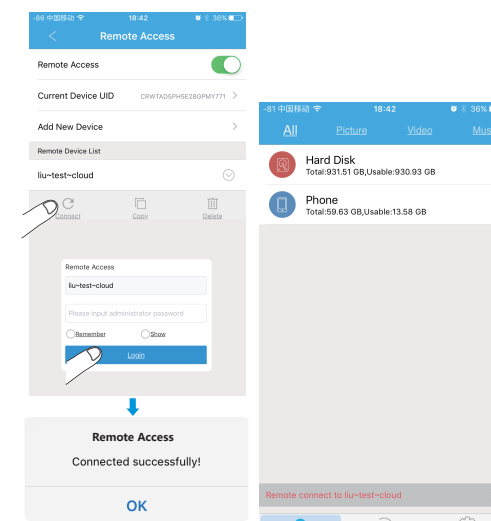
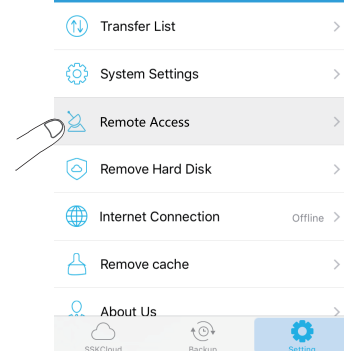
Connect SSM-F200 to PC by the wire-High-speed HDD mode



Remote accessing mode

Connect sskcloud to internet How to connect sskcloud to internet please reference the steps of 3

(1)Remote access by Smart phone & Tablet PC
Click on the remote access icon



The remote access visit has been successful.

(2) PC/MAC Remote Accessing sskcloud

1. Open the browser, enter the URL:http://en.ssk.cn/Support/download/Intelligent/index.html to download SSKcloud software. According to different operating systems, choose the corresponding version to download and install, WINDOWS 32 bit, 64 bit or MAC OS;

2. Installation under WINDOWS OS

- A. Double click the downloaded SSKCloud Setup.Exe installation package to automatically install and display progress;
- B. After installation, you can see the SSKcloud icon on the desktop, which means the installation is successful

3. Installation under MAC OS

- A. Double click the downloaded SSKCloud.dmg installation package, appear the SSKCloud icon and Applications, drag the SSKCloud icon to Applications and start the installation;
- B. The SSKCloud icon appears in the Applications, which means the installation is successful

4. Run SSKcloud software, input device UID and admin password for data management and remote access.

Ways to get UID no.:

Web Accessing to check UID no.:

Status----- Internet Access----- UID

Through SSKCloud App to check UID no.:

Settings----- Remote Access-----Current Device UID

TIPS AND FAQ of SSK

What is "SSM-F200 SSK Cloud" ?

"SSM-F200 SSK Cloud" is a solution for the storage, backup and management of personal data, the system of which can keep the privacy and stability of the data effectively, you can read and store the data anywhere anytime.

How about its features?

- Built-in 2.5 inch 1TB storage, with USB3.0Hi-transmission rate;
- Built-in 4000mAh Lithium polymer battery, portable and convenient to use;
- High-gain WiFi antenna, 300Mbps wireless connecting and transmitting rate;
- Simple APP remote management, multiple fast backup modes;
- Support remote access and manage, you can read and store the data anywhere anytime;
- Support multiple platforms using, such as IOS, Android, Windows, Mac OS.

How to connect it with mobile

Connect the WiFi hotspot of SSKCLOUD showed in your mobile phone, and then click the APP to visit the cloud.

Can videos stored in it be played directly?

No matter what kind of your device is, Apple or Android, can play the main stream format video directly by SSKCLOUD client-side software.

Wireless transmission rate

SSK Cloud adopts 2.4G network output 802.11n wireless protocol standards, its max transmission rate can be 300Mbps, with 2.4G network, signal coverage of which is broad and its signal penetrability is strong.

The system of SSK Cloud

The Linux of the SSK Cloud uses is developed by SSK, and it has a good security rate and high efficiency. And it can be more intelligent and stable by periodical OTA update.

The HDD and Format of SSK Cloud

Please do not shake or drop it when it is powered in order to make sure its normal work, because of the built-in 2.5" 1TB HDD. The partition and format of the product has been done already, so it can be used directly after setup.

The warranty and DATA

One year warranty service is provided after sales, and the HDD can be changed freely if there is malfunction or damage which is comply with the warranty regulations during the warranty period.

*And all data in the SSK Cloud will not be saved or recovered when its HDD need to be changed or repaired, so synchronize backup your data to the public cloud is recommended.

The dormancy of the product

In order to make sure its efficiency and stability, the HDD of the product will shift work/dormancy status automatically, to reduce power consumption and a better protection for the HDD.

